

DATT-016-1

PIVOT
engineered to endure

Disconnect & Test Terminal 16mm²

Lever operated, 16mm² disconnect terminal for isolating and testing of circuits. A high reliability connector designed for harsh environments reducing maintenance and installation times.



FEATURES

- 100% Touchproof
- High reliability
- Time saving
- Secure lever clamp termination
- Rated cross section 1.5mm~16mm²
- No tools required
- G Rail or Din Rail mounting

ACCESSORIES

- Blue, Orange & Red “dummy lock out link”
- Yellow & Black disconnect link
- Fuse cartridge 10A, 25x5mm & 32x6mm
- Bus combs 2 to 10 way
- Power jumper 2 ,3 & 4 way
- Staging connector
- Terminal markers

ORDERING DETAILS

- # DATT-016-1 w/black disconnect link
- # DATT-016-2 w/yellow disconnect link

APPROVALS

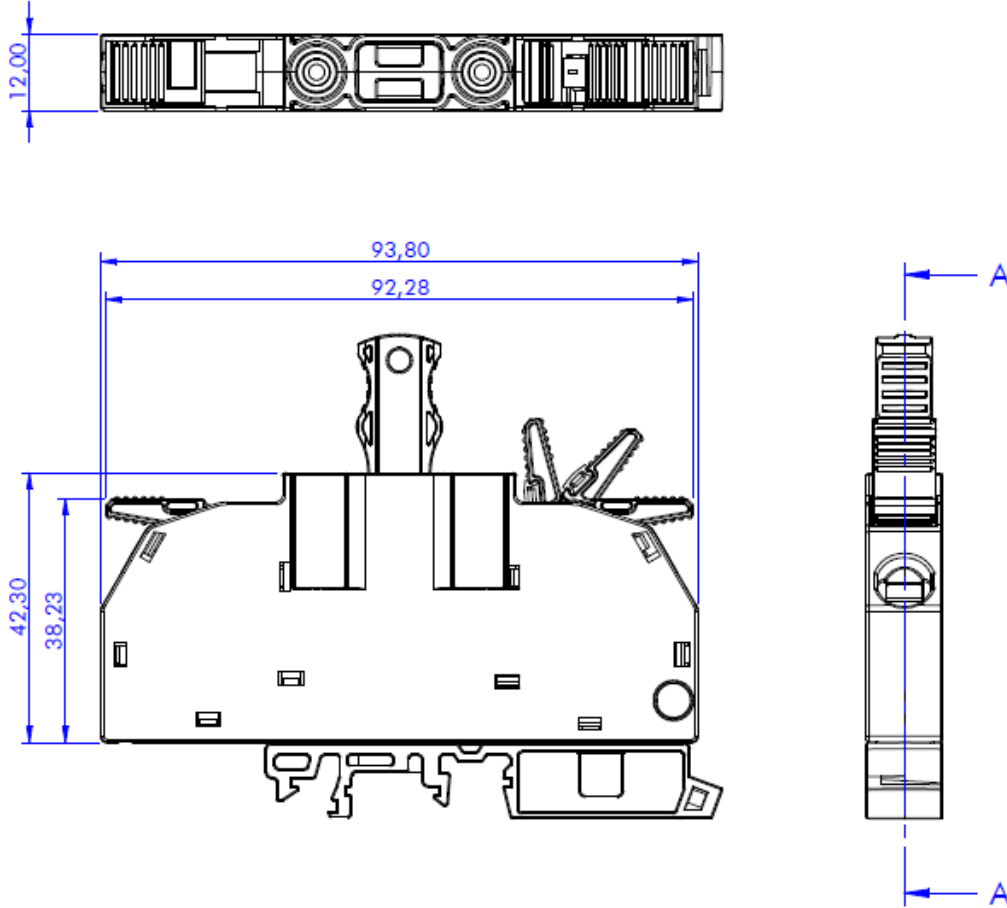
- Kiwi Rail # S-TA-0181
- Sydney Trains #SC16/1004R01
- ARTC #NESA-S074

Physical & Electrical Data

MODEL	DATT-016-1
Rating system voltage	600V AC/DC
Continuous operating temperature	50 °C to 70°C
Rated current (max cross-section)	32A
Rated withstand disconnect voltage (with link removed)	6KV DC
Rated impulse withstand voltage (10/700µs)	6KV DC
Leakage current input to mounting base	<100µA 6KVDC
Leakage current between adjacent units	<100µA 6KVDC
Leakage current to between input & output w/link removed	<100µA 6KVDC
Voltage drop at rated current	77mV
Insulation resistance	>200M Ohm @ 500V
End to end resistance	<2.5mΩ
Pollution severity	3
Overvoltage category	III
Method of mounting	Snap on
Type of mounting	DIN-35 & G Rail
Open side	Nil
Material	Nylon 6/6
UL 94 Flammability	V0
Colour	Medium Grey
Connection technology	Lever clamp
Actuation type	Lever
Clamping range, rated connection, min * recommended below 1.5mm ² to ferrule conductor	0.5mm ²
Clamping range, rated connection, max	16mm ²
Stripping length	14 ~ 15mm
Total number of potentials	1
Integral test socket	2mm (x2)
Banana test socket	4mm (x2)
Degree of protection	IP20
Approvals	Kiwi Rail # S-TA-0181, Syd Trains #SC16/1004R01
Dimensions (Height fitted with disconnect link)	12 x 77 x 93.8mm (w x h x d)
Weight	60g

DATT-016-1

Dimensional Drawing (mm)



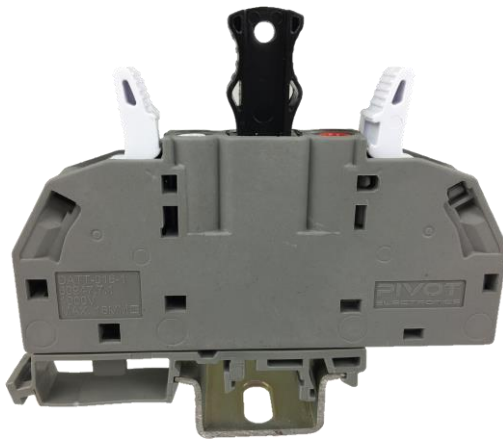
Installation

Step 1

Snap on terminal to Din rail or G rail

Step 2

Open the clamping unit by pulling the operating levers all the way back. Insert ferruled cable or stripped cable, close levers.



Disconnect terminal and optional accessories

